



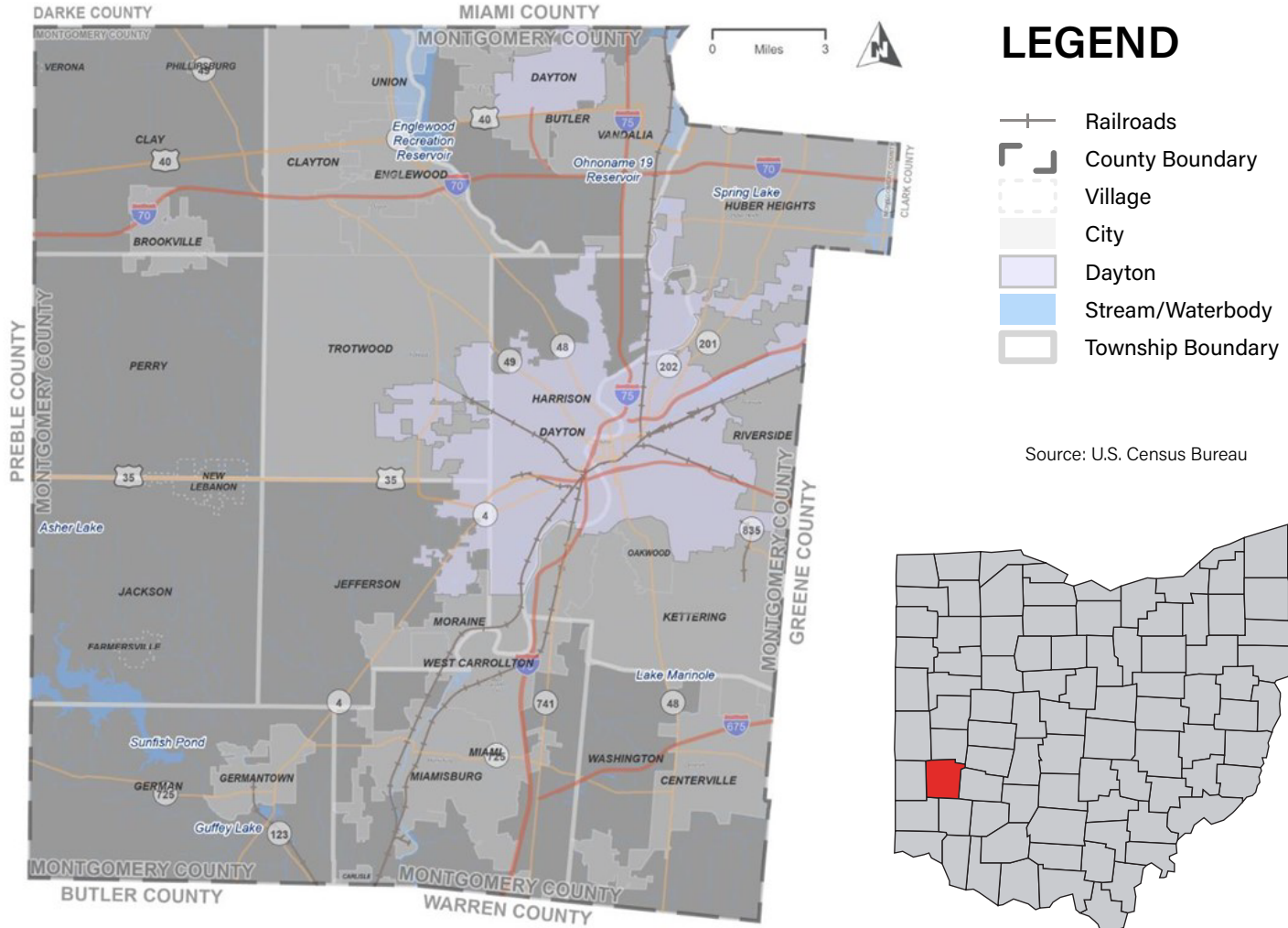
MONTGOMERY
C O U N T Y
ENVIRONMENTAL SERVICES

2024

Solid Waste Management Plan Update

Executive Summary

© 2011 Blackwell Publishing Ltd *Journal of Internal Medicine* 270: 103–110



The Solid Waste Management Plan

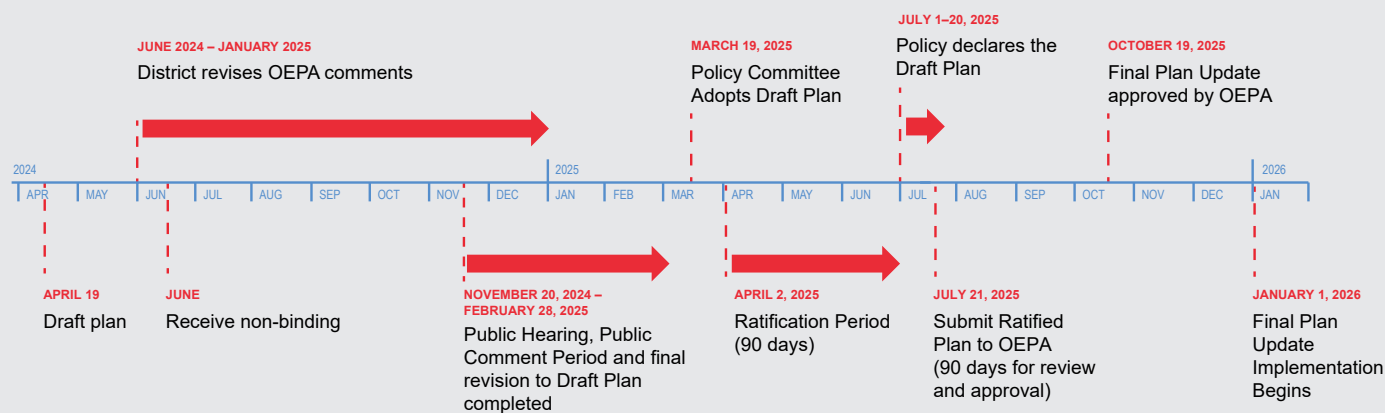
This Solid Waste Management Plan Update ("Plan") is a regulatory document overseen by the Ohio Environmental Protection Agency ("Ohio EPA") and serves as a roadmap for Montgomery County to reduce its reliance on landfills and to manage the solid waste generated in the County. The Plan is updated every five years, describes the waste reduction and diversion programming that will be undertaken during the planning period, and demonstrates that these programs are adequate to achieve the Plan's goals. To update the prior plan ratified in 2019, the SWMD performed a strategic, in-depth review of existing programs and services, recycling infrastructure, recovery efforts, and finances – as per Ohio EPA requirements

To advance the Plan document to ratification, the SWMD developed conclusions about the strengths and weaknesses of the SWMD's Plan and worked with the policy committee to demonstrate that Plan programs and services will meet the needs of the SWMD.



Ohio Revised Code (ORC) 3734.53 and Ohio Administrative Code (OAC) Rule 3745-27-90 specify the contents of a solid waste management plan. The Ohio EPA prescribes a District Solid Waste Management Plan Format that requires a series of Appendices. This format is very similar in concept to a permit application for a solid waste landfill.

Timeline



*This timeline is not final and subject to change.

Meeting State Goals

The State of Ohio's Solid Waste Plan has 10 goals. The District meets or exceeds all 10 of these goals. Two of the primary goals for the SWMD are:

GOAL 1 The SWMD shall ensure that there is adequate infrastructure to give residents and commercial businesses opportunities to recycle solid waste.

- ▶ Analysis shows there is 25 years of capacity at applicable landfills and sufficient disposal and processing infrastructure, more than enough to serve the SWMD's needs over the plan timeline (2026-2040).

GOAL 2 The SWMD shall reduce and recycle at least 25 percent of the solid waste generated by the residential/commercial sector.

- ▶ Based on the analysis, the SWMD's recycling rate will exceed the 25 percent goal over the planning period (2026-2040).

Key Fact

Between 2017 and 2021:

- ▶ Disposal has increased by about **55,000 tons**
- ▶ Recycling has increased by about **50,000 tons**

These trends are consistent with those of other urban SWMDs in Ohio.

SWMD Provides Access to Sufficient Collection, Recycling, Composting, and Disposal Capacity

27 communities with contracted curbside recycling services



1 community with subscription curbside recycling services



2 landfills with over 25 years of useful life each

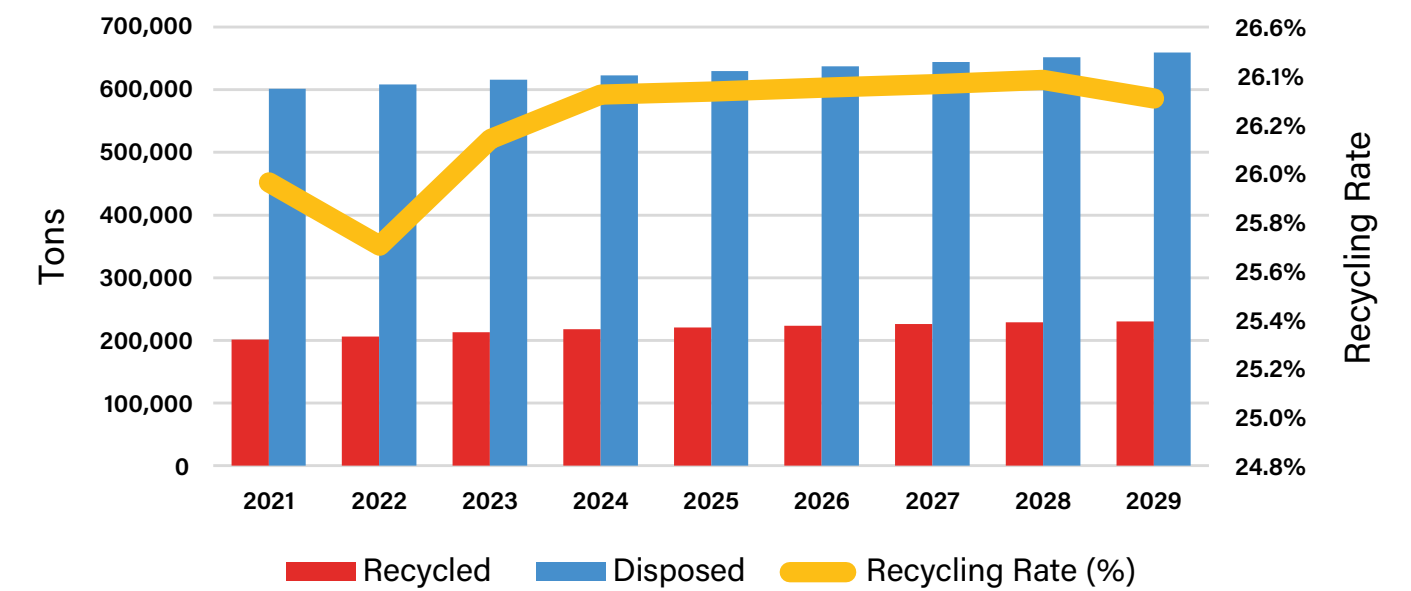


3 material recovery facilities and 2 drop off sites



16 composting facilities and 1 food/yard waste management facility

2021-2029 Projected Recycling Rate



Sufficient Disposal Capacity

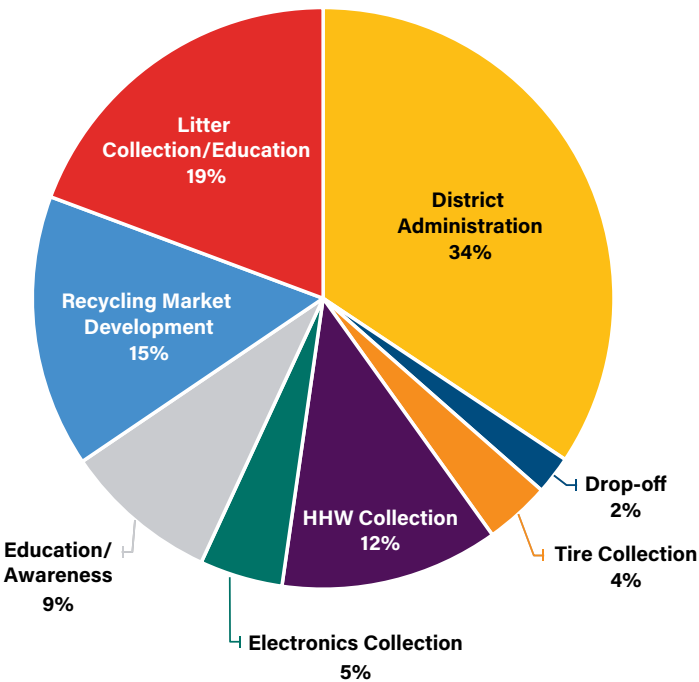
Stony Hollow Landfill (in Montgomery County) and Rumpke Sanitary Landfills (in Hamilton and Brown Counties) account for 96 percent of the waste disposed by the District. Each facility has over 25 years of useful life, providing more than enough capacity to serve the SWMD’s needs over the planning period (2026-2040).

Budget

The SWMD funds programs that are consistent with the 10 allowable uses, as determined by the Ohio EPA. These programs include education, specialty waste management, administration, and and others as shown in the Projected 2026 SWMD Expenses chart.

District is increasing generation fee from \$3.00/ton to \$3.65/ton in 2026 and 6% increases each year thereafter to support future programming

Projected SWMD 2026 Expenses (\$3 million)



Key Findings and Next Steps

The SWMD is presently complying with the regulations and requirements set forth by the Ohio EPA. Additionally, the District is committed to remaining in compliance with the Ohio EPA guidelines over the planning horizon. Landfills serving the SWMD have disposal capacity to serve the County's needs through 2040 and there is a robust set of infrastructure to meet SWMD's recycling needs.

To support programming that assists in the responsible management of solid waste within Montgomery County, the SWMD is planning to increase generation fees by 22 percent in 2026.

The below next steps are selected actions generated by SWMD that will be pursued during the upcoming planning period:



Curbside Collection

- ▷ Expand Recycle Right program for municipalities
- ▷ Conduct analysis to improve recycling participation and decrease contamination



Commercial Sector

- ▷ Expand business community relationships
- ▷ Use data from RFP to create school education campaign



Industrial Sector

- ▷ Develop strategy to promote Ohio EPA Material Marketplace



Residential/Commercial Waste Composition

- ▷ Explore food waste collection and processing



Grants

- ▷ Promote food waste reduction eligible for the Community Recycling Incentive Grant
- ▷ Amend required 30 percent community match
- ▷ Grant through Ohio EPA E3 Program



Financial Analysis

- ▷ Increase generation fee in 2026 to support proposed expanded programming



Education and Outreach

- ▷ Continue updates, enhancements, and expansions to current programming

Additional Information

A full version of the Montgomery County SWMD's Plan can be found at mcoho.org/214/Environmental-Services.

For more information, please visit mcoho.org/401/Solid-Waste