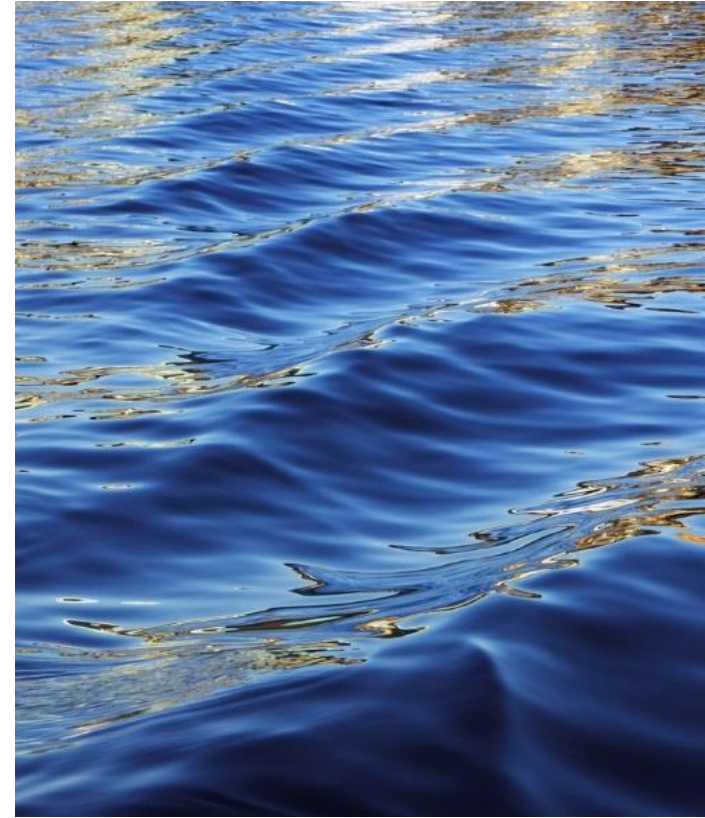


NEWFIELDS DAM EMERGENCY ACTION PLAN

CHERYL WHEELER

STEPHANIE KELLUM

JANUARY 4, 2021

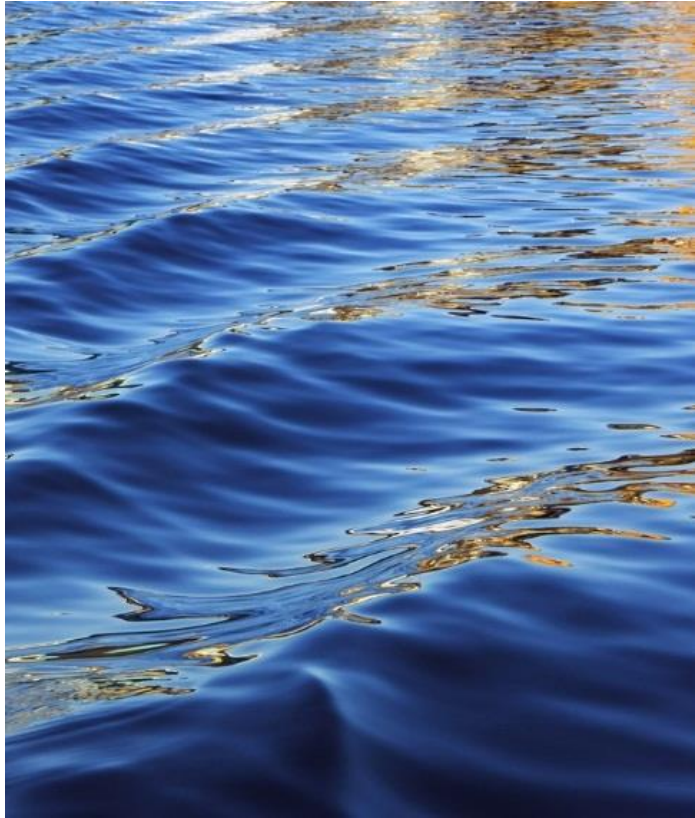


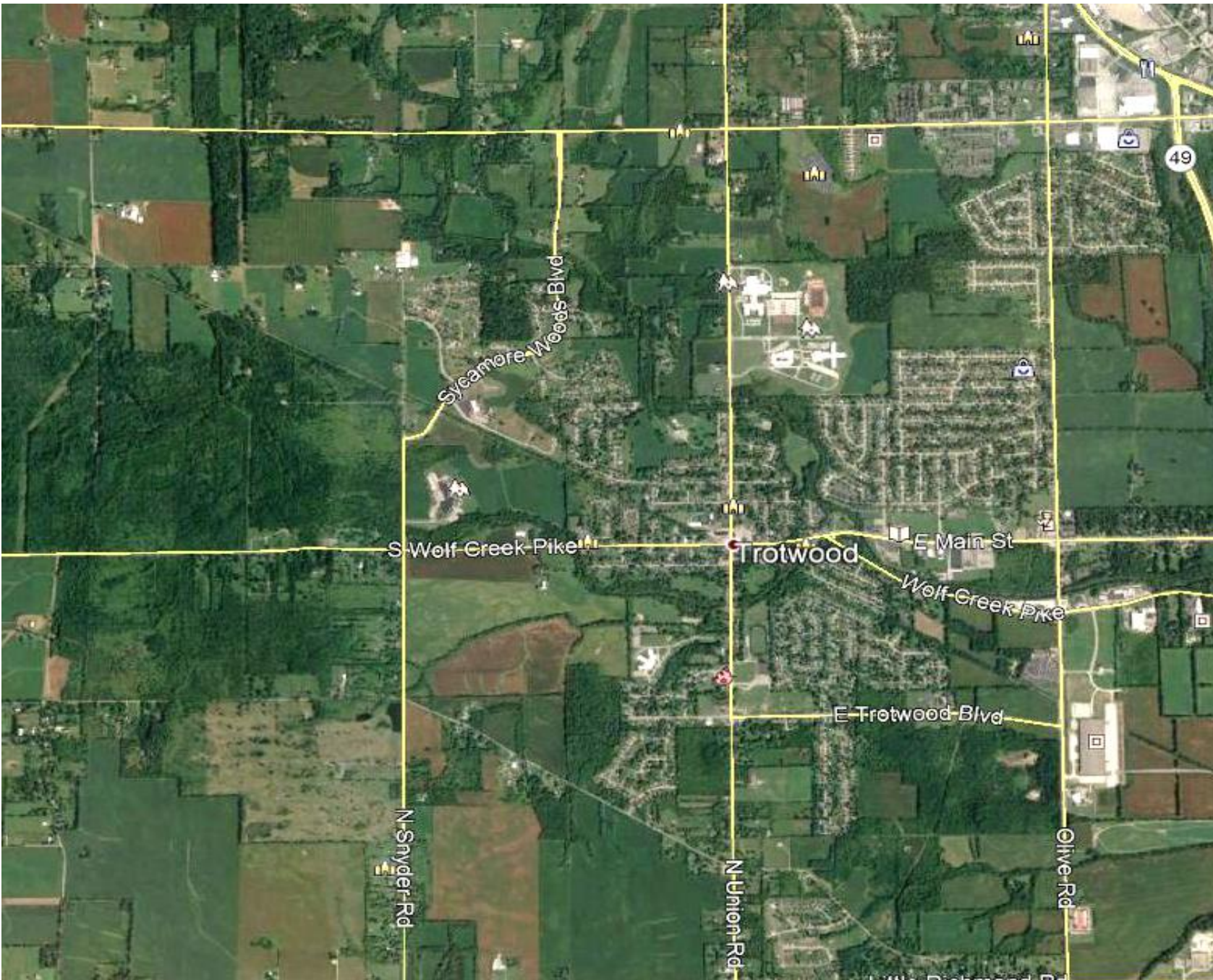


NOTIFICATION FLOWCHART

This Emergency Action Plan (EAP) was prepared for use by the City of Trotwood and partner agencies to guide actions during an emergency situation at the Newfields Development Dam. Emergency conditions are classified as shown in the following table.

City staff shall utilize the Notification Flowcharts provided in this section to inform the appropriate personnel and entities of the condition at the dam site. In addition, prescribed messages are provided in this section for use by City staff.





NEWFIELDS DEVELOPMENT DAM PERTINENT DATA

Top of Dam Elevation	879
Emergency Spillway Elevation	875 & 875.8
Emergency Spillway Width	30 feet & 44 feet
Principal Spillway Elevation	873.3
Upstream Slope	4:1 (H:V)
Downstream Slope	2:1 (H:V)
Length	800 feet
Drainage Area	0.35 SM



EVACUATION AREA IF DAM FAILURE OCCURS




THIS AREA INCLUDES THE FOLLOWING STREETS:

SHERRY DRIVE
HILLPOINT STREET
ELMORE STREET
WESTLAND DRIVE
BELMORE TRACE

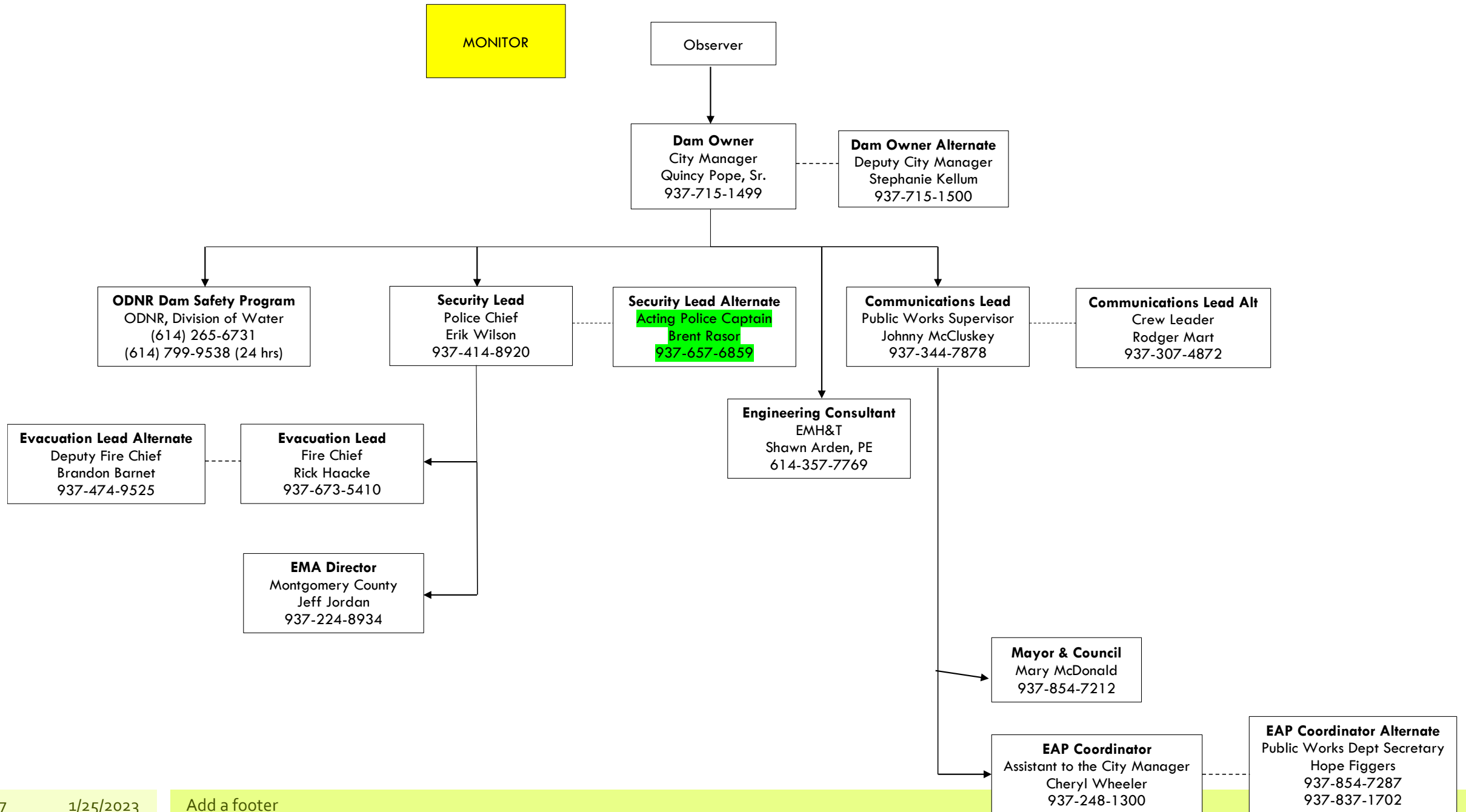
ARUNDEL ROAD
SHADOWS GLADE DRIVE
ELYSIAN COURT
TUSCOLA DRIVE



WARNING LEVELS

	Monitor	A hazardous condition exists, requiring investigation and corrective action; potential for failure is being assessed; corrective measures are underway
	Watch	Potential dam failure situation is developing.
	Warning	Dam failure is occurring or is imminent.

NOTIFICATION FLOWCHART
Emergency Condition: Monitor



ADDITIONS TO EMERGENCY OPERATIONS

- Based on our experience with the tornadoes, we noted additional positions needed to ensure smooth operations addressing the emergency and maintaining daily tasks.
- Positions added included:
 - Transportation organizations (RTA and the Schools)
 - Website Master (updating communications)
 - Volunteer Coordinator (Responding to victims and the public)
 - Donations Coordinator (Responding to victims and the public)

QUESTIONS

